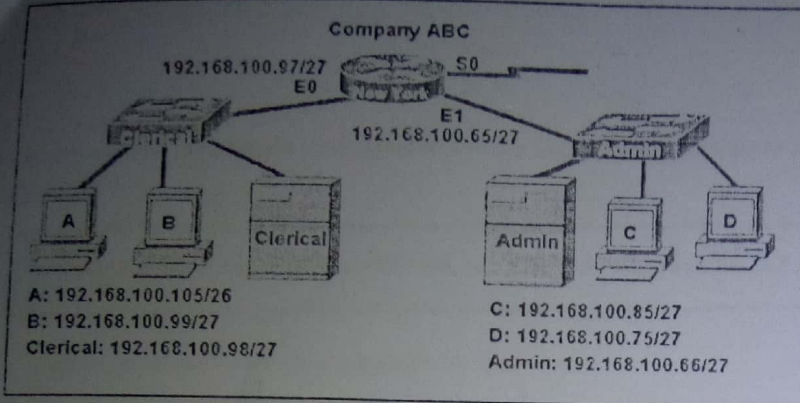


Examine the graphic with current configurations. Host A in the Clerical offices failed and was replaced. Although a ping to 127.0.0.1 was successful, the replacement computer can not access the company network. What is the likely cause of the problem?



- IP address incorrectly entered
- network cables unplugged
- subnet mask incorrectly entered
- network card failure

Refer to the exhibit. A network administrator is testing the configuration on a host computer. What type of address is 127.0.0.1?

```
C:\>ping 127.0.0.1

Pinging 127.0.0.1 with 32 bytes of data:

Reply from 127.0.0.1: bytes=32 time<1ms TTL=128
Reply from 127.0.0.1: bytes=32 time<1ms TTL=128
Reply from 127.0.0.1: bytes=32 time<1ms TTL=128
Reply from 127.0.0.1: bytes=32 time<1ms TTL=128

Ping statistics for 127.0.0.1:
    Packets: Sent = 4, Received = 4, Lost = 0 (0% loss),
    Approximate round trip times in milli-seconds:
        Minimum = 0ms, Maximum = 0ms, Average = 0ms
```

- link-local
- loopback
- public
- default route

What portion of the IP address does the prefix represent?

- broadcast
- host
- network
- unicast

Which is true regarding IP network addresses?

- all host bits are set to 0
- all host bits are set to 1
- assigned the highest address in a range
- all network bits are set to 1

Refer to the exhibit. The numbers in the exhibit are part of a single subnet. Which statements are true regarding these numbers? (Choose three.)

192.168.223.99 192.168.223.107 192.168.223.117 192.168.223.127

- Their final octet has 4 of the most significant bits in common.
- They have 5 low-order bits in common.
- They have 27 high-order bits in common.
- 192.168.223.99 is a feasible network number for their range.
- 255.255.255.224 is an appropriate mask for their range.
- 192.168.223.127 is the broadcast address for their range.

Which frame field is created by a source node and used by a destination node to ensure that a transmitted data signal has not been altered by interference, distortion, or signal loss?

- transport layer error check field
- frame check sequence field
- User Datagram Protocol field
- error correction process field
- flow control field

What do network hosts use data link layer addresses for?

- remote delivery
- local and remote delivery
- local delivery
- remote delivery using routers

Which three basic parts are common to all frame types supported by the data link layer? (Choose three.)

- header
- type field
- MTU size
- data
- trailer
- CRC value

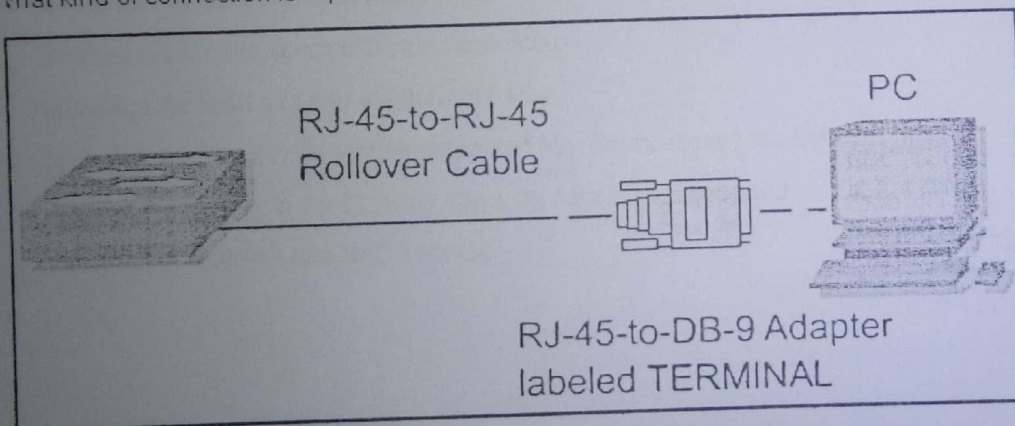
Which of the following are sublayers of the Data Link layer?

- ACL, LMC
- MAC, LAC
- MAC, LLC
- OSI, LLC

Which of the following are data link layer encapsulation details? (Choose two.)

- A header and trailer are added.
- Data is converted into packets.
- Packets are packaged into frames.
- Frames are divided into segments.
- Packets are changed into bits for Internet travel.

What kind of connection is represented in the graphic?



- console connection
- Ethernet connection
- ISDN connection
- leased line connection

Through what process does UTP cable help to avoid crosstalk?

- shielding of cable
- twisting of pairs
- grounding the end points
- cladding in cable

What cable type would be used to connect a computer directly to another computer?

- Straight-through
- Rollover
- Crossover
- Console

What are the advantages of using fiber optic cable over copper cable? (Choose three.)

- copper is more expensive
- immunity to electromagnetic interference
- careful cable handling
- longer maximum cable length
- efficient electrical current transfer
- greater bandwidth potential

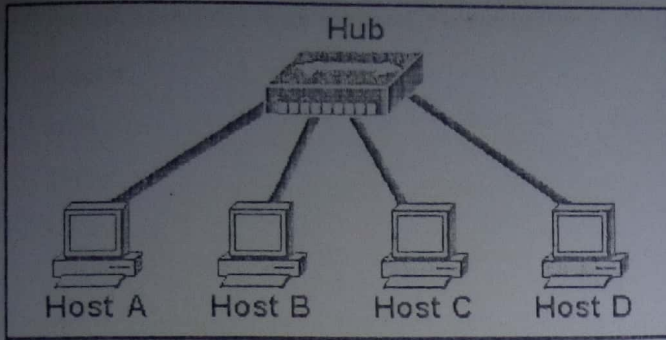
What is a primary function of CSMA/CD in an Ethernet network?

- assigns MAC addresses to hosts
- defines the area in which collisions can occur
- identifies the start and end of Ethernet frame
- provides a method to determine when and how hosts access the Ethernet medium
- creates the header in the Ethernet frame as data is encapsulated
- maps an IP address to a MAC address

What address type does a switch use to make selective forwarding decisions?

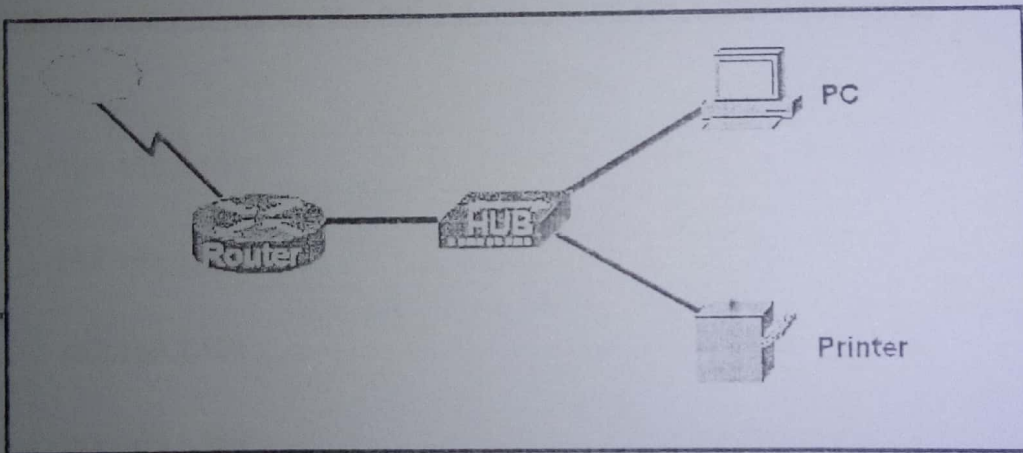
- source IP
- destination IP
- source MAC
- destination MAC

...the graphic, Host A has reached 50% completion in sending a 1 KB Ethernet frame to Host D when Host B wishes to transmit its own frame to Host C. What must Host B do?



- Host B can transmit immediately since it is connected on its own cable segment.
- Host B must wait to receive a CSMA transmission from the hub, to signal its turn.
- Host B must send a request signal to Host A by transmitting an interframe gap.
- Host B must wait until it is certain that Host A has completed sending its frame.

Which devices shown in the graphic must have a MAC address?



- only PC
- only router
- PC and router
- PC, hub, and router
- PC, printer, and router

Which of the following are private IP addresses? (Choose three.)

- 10.1.1.1
- 172.32.5.2
- 192.167.10.10
- 172.16.4.4
- 192.168.5.5
- 224.6.6.6

Which utility shows the route a packet takes to reach its destination?

- netstat
- ping
- Telnet
- tracert

Which combination of network id and subnet mask correctly identifies all IP addresses from 172.16.128.0 through 172.16.159.255?

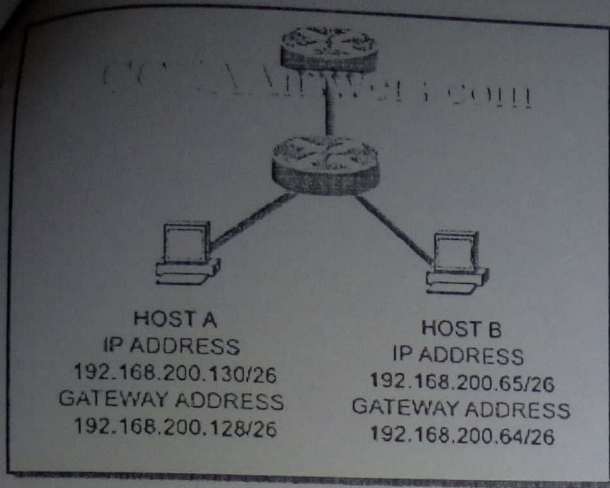
- A. 172.16.128.0 255.255.255.224
- B. 172.16.128.0 255.255.0.0
- C. 172.16.128.0 255.255.192.0
- D. 172.16.128.0 255.255.224.0
- E. 172.16.128.0 255.255.255.192

What are valid hosts for the 6th subnet of 192.168.1.0/27? (Select 2)

- 192.168.1.167
- 192.168.1.192
- 192.168.1.191
- 192.168.1.159
- 192.168.1.175

Which addresses belong to the category of public IP addresses? (Choose two.)

- 127.0.0.1
- 196.1.105.6
- 169.11.9.99
- 10.0.0.1
- 172.16.9.10
- 46.1.1.97



Refer to the exhibit. Host A and B are unable to communicate with each other. What is the reason for this?

- Host A is assigned a network address.
- Host B is assigned a multicast address.
- Host A and host B belong to different networks.
- The gateway addresses are network addresses.

-What is the netmask of the gateway interface in a sub-network where only 14 hosts may exist and IP address of one of the hosts is 193.145.122.76 ?

- a) 255.255.255.224
- b) 193.145.122.15
- c) 255.255.255.0
- d) 193.145.122.240
- e) 255.255.255.240
- f) 255.255.0.0

-What is a broadcast IP address for 193.140.141.128 / 26 ?

- a) 193.140.141.128
- b) 193.140.141.127
- c) 255.255.255.63
- d) 255.255.255.191
- e) 193.140.141.191